



# Alleggheny

## Health Network

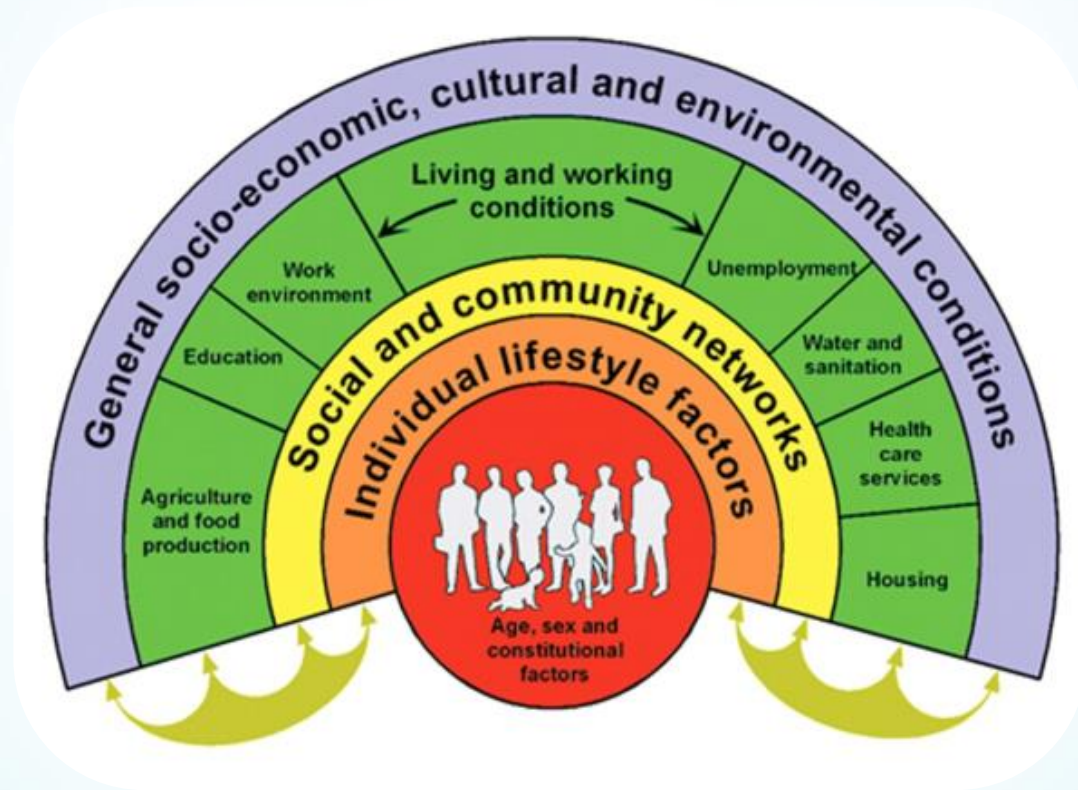
Center for Inclusion Health

# Protecting Recovery: Basic Principles

- Recovery:
  - Starts before substance use ends
  - May not include complete abstinence
  - Depends on re-establishing connections and integration into community
  - Is client driven
  - Includes harm reduction from beginning to end
  - Empowers and celebrates any positive change



# Social Determinants of Health



# Critical Protective Factors to be addressed in Recovery

- Healthcare access/Insurance
- Housing
- Jobs
- Community engagement
- Stigma
- Legal Issues
- Financial Issues



# Health, Healthcare and Recovery

- Health, Healthcare and Recovery are connected but different concepts
- We need healthy communities that accept people who are using substances and those trying to achieve recovery and support them to maintain and achieve a healthier life
- We need healthcare settings that do the same thing across all care settings to identify problems and provide evidence based solutions
- We need healthcare systems that invest in and work with communities to build healthier, safer places to achieve recovery and well-being for everyone

# Some Healthcare Needs for People who use Drugs

- Screening for HIV, HCV and other co-morbidities
- Providing information about sterile syringe access, safer injection, naloxone for substance users - even if the person is in recovery
  - relapse happens and information can be passed to others
  - everyone deserves protection and should enter recovery alive and as healthy as possible
- Primary care that includes substance use screening and treatment if needed
- Multi-disciplinary teams that integrate physical and behavioral health across all settings
- Substance Use and Recovery is addressed in the context of the overall health needs of the person



# It takes a village:

